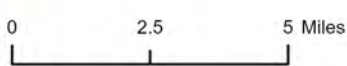


# COMANCHE COUNTY

## Commissioner Precincts

- Structures in floodplain
- Structures
- Floodplain
- Flowpath
- Waterbody
- High-Hazard dam
- Dam
- Stream gauge



**Data sources**  
 Floodplain Quilt by the Texas Water Development Board (TWDB) and includes Base Level Engineering (BLE) and traditional 100-yr floodplain data by the Federal Emergency Management Agency (FEMA). Structure footprints by the United States Army Corps of Engineers (USACE) National Structures Inventory. Waterbodies by the United States Geological Survey (USGS) National Hydrography Dataset (NHD).

## DIGITAL RISK INFRASTRUCTURE PROGRAM

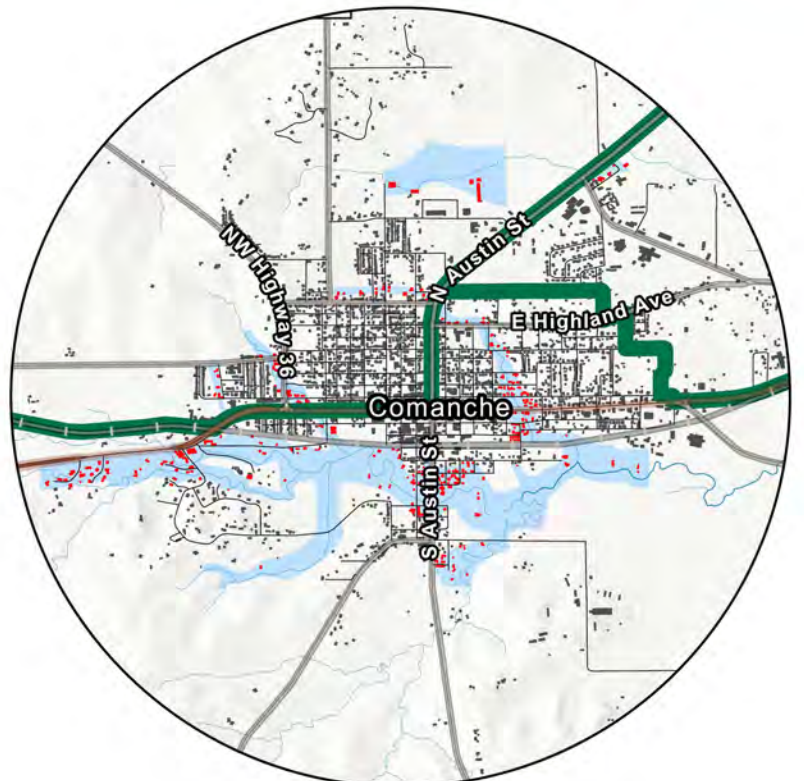
The Digital Risk Infrastructure Program (DRIP) is funded through the Texas State Legislature and is an initiative by the Institute for a Disaster Resilient Texas (IDRT), Texas A&M University at Galveston, Texas A&M AgriLife Extension, and The University of Texas at Austin Moody

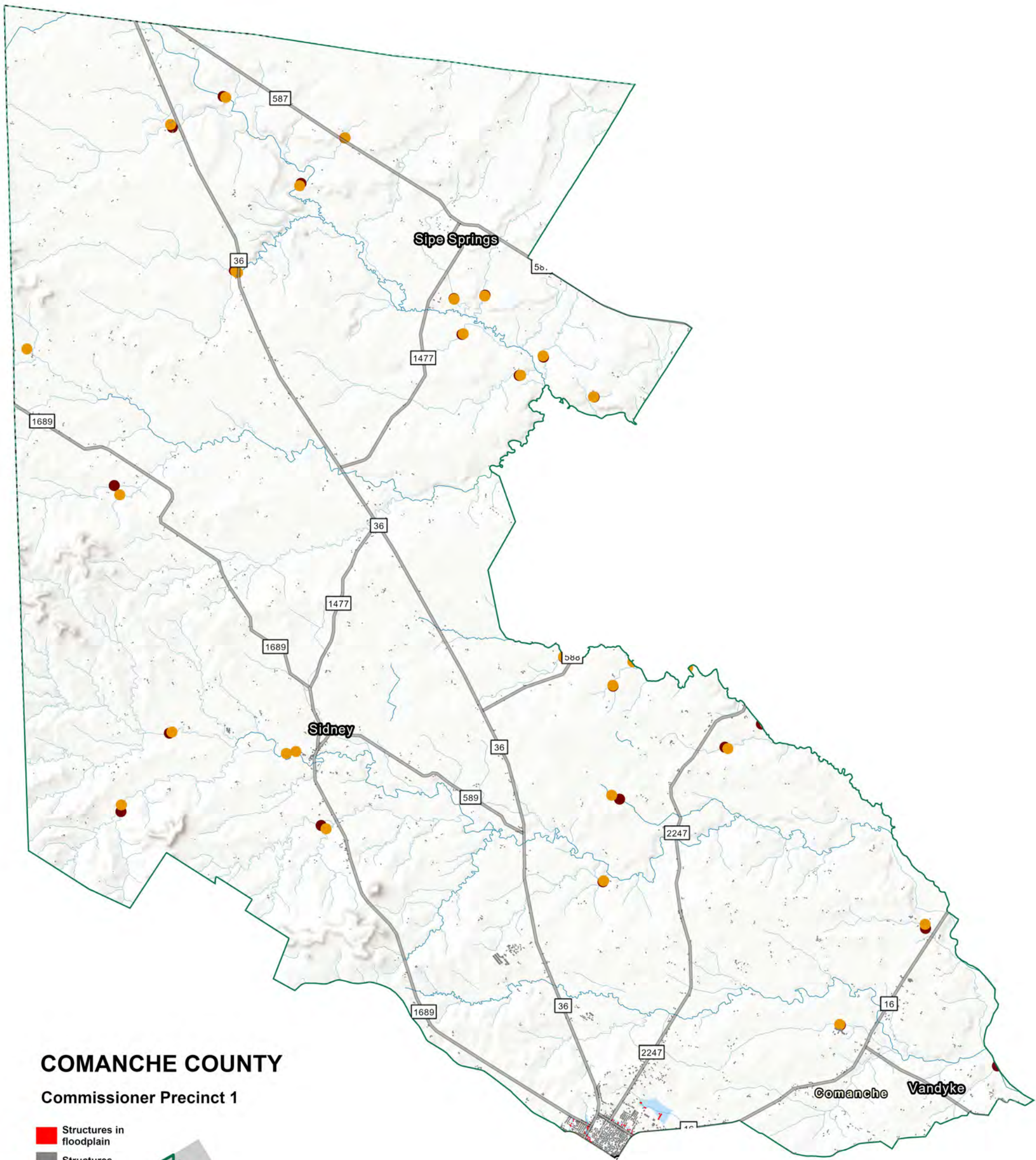
This map is intended for planning purposes only. Map layers and floodplains do not contain drainage information and do not serve regulatory purposes. For additional information and questions, please email [idr@tamug.edu](mailto:idr@tamug.edu)



Date created: 09/15/2023

Exif: NASA, NOAA, USGS, Texas Parks & Wildlife, CONANP, Exif: HERE, Garmin, SafeGraph, GeoTechnologies, Inc., METINASA, USGS, EPA, NPS, USDA, Exif: COIAR, USGS, Texas Parks & Wildlife, CONANP, Exif: HERE, Garmin, SafeGraph, METINASA, USGS, EPA, NPS, USDA

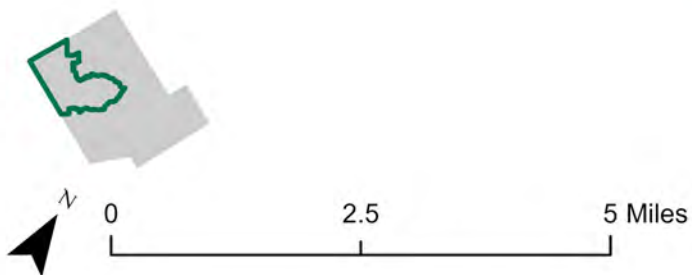




# COMANCHE COUNTY

## Commissioner Precinct 1

- Structures in floodplain
- Structures
- Floodplain
- Flowpath
- Dam
- Stream gauge



### Data sources

Floodplain Quilt by the Texas Water Development Board (TWDB) and includes Base Level Engineering (BLE) and traditional 100-yr floodplain data by the Federal Emergency Management Agency (FEMA).  
 Structures by FEMA GIS USA Structures.  
 Dams by the U.S. Army Corps of Engineers (USACE) National Inventory of Dams (NID).  
 Waterbodies by the United States Geological Survey (USGS) National Hydrography Dataset (NHD).  
 Roadways by Texas Department of Transportation (TXDOT).

### DIGITAL RISK INFRASTRUCTURE PROGRAM

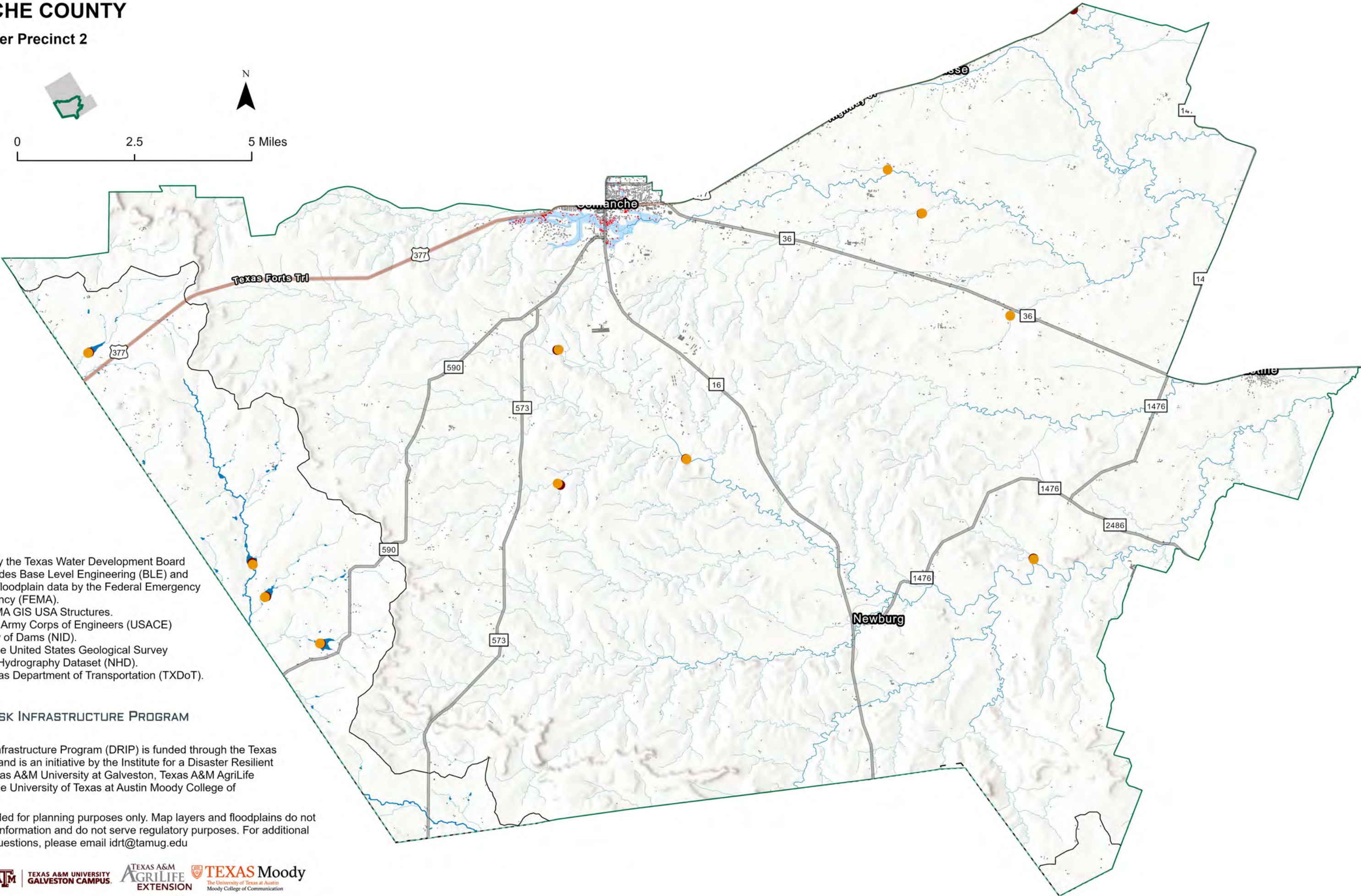
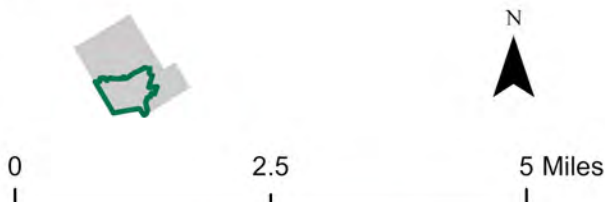
The Digital Risk Infrastructure Program (DRIP) is funded through the Texas State Legislature and is an initiative by the Institute for a Disaster Resilient Texas (IDRT), Texas A&M University at Galveston, Texas A&M AgriLife Extension, and The University of Texas at Austin Moody College of Communication.

This map is intended for planning purposes only. Map layers and floodplains do not contain drainage information and do not serve regulatory purposes. For additional information and questions, please email [idr@tamug.edu](mailto:idr@tamug.edu)

# COMANCHE COUNTY

## Commissioner Precinct 2

- Structures in floodplain
- Structures
- Floodplain
- Flowpath
- Dam
- Stream gauge



**Data sources**  
Floodplain Quilt by the Texas Water Development Board (TWDB) and includes Base Level Engineering (BLE) and traditional 100-yr floodplain data by the Federal Emergency Management Agency (FEMA).  
Structures by FEMA GIS USA Structures.  
Dams by the U.S. Army Corps of Engineers (USACE) National Inventory of Dams (NID).  
Waterbodies by the United States Geological Survey (USGS) National Hydrography Dataset (NHD).  
Roadways by Texas Department of Transportation (TXDoT).

### DIGITAL RISK INFRASTRUCTURE PROGRAM

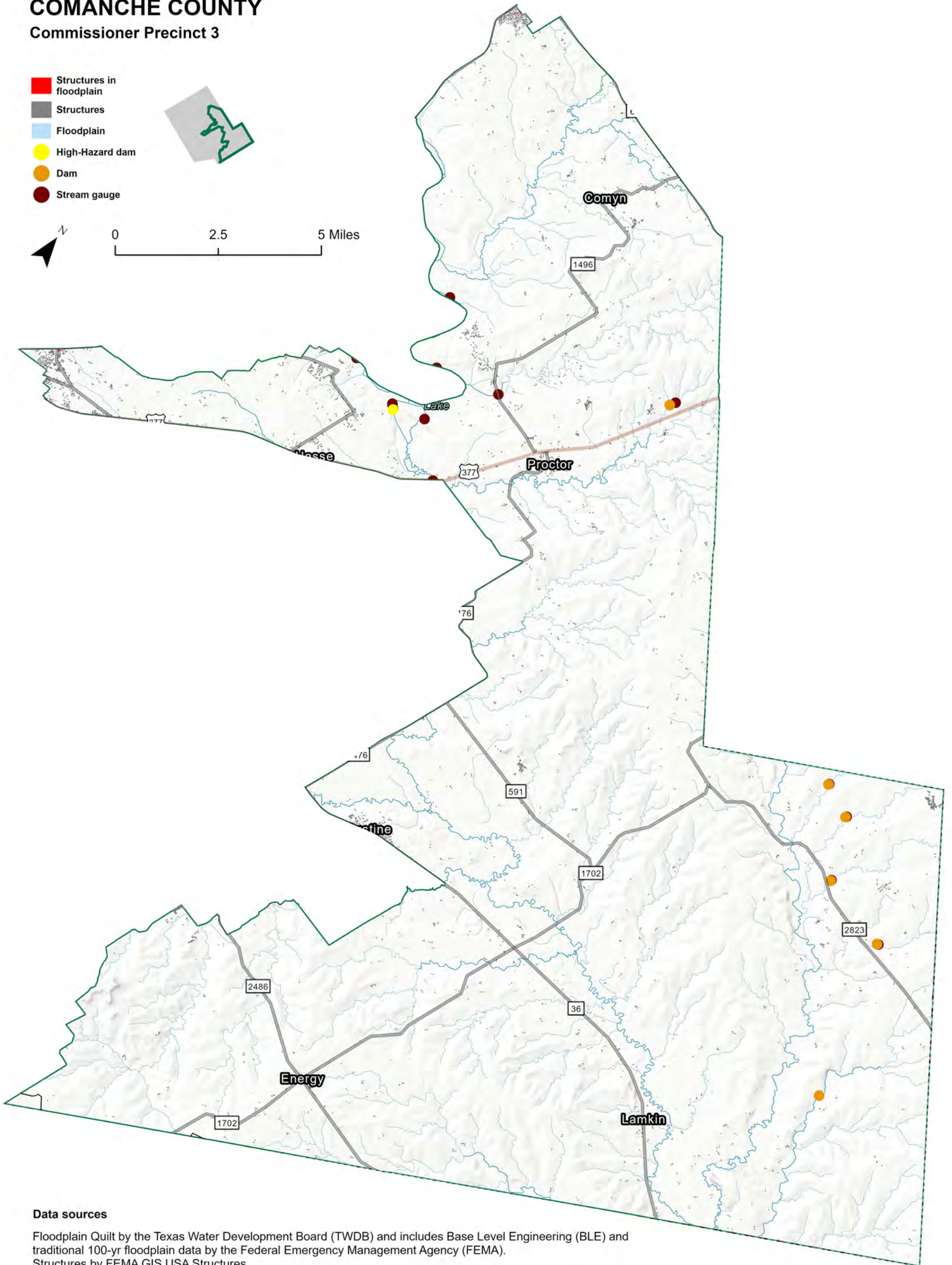
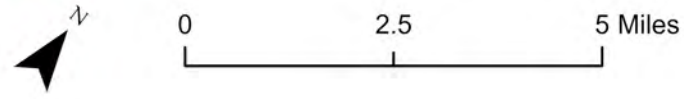
The Digital Risk Infrastructure Program (DRIP) is funded through the Texas State Legislature and is an initiative by the Institute for a Disaster Resilient Texas (IDRT), Texas A&M University at Galveston, Texas A&M AgriLife Extension, and The University of Texas at Austin Moody College of Communication.

This map is intended for planning purposes only. Map layers and floodplains do not contain drainage information and do not serve regulatory purposes. For additional information and questions, please email [idrt@tamug.edu](mailto:idrt@tamug.edu)

# COMANCHE COUNTY

## Commissioner Precinct 3

- Structures in floodplain
- Structures
- Floodplain
- High-Hazard dam
- Dam
- Stream gauge



### Data sources

Floodplain Quilt by the Texas Water Development Board (TWDB) and includes Base Level Engineering (BLE) and traditional 100-yr floodplain data by the Federal Emergency Management Agency (FEMA).  
 Structures by FEMA GIS USA Structures.  
 Dams by the U.S. Army Corps of Engineers (USACE) National Inventory of Dams (NID).  
 Waterbodies by the United States Geological Survey (USGS) National Hydrography Dataset (NHD).  
 Roadways by Texas Department of Transportation (TXDOT).

### DIGITAL RISK INFRASTRUCTURE PROGRAM

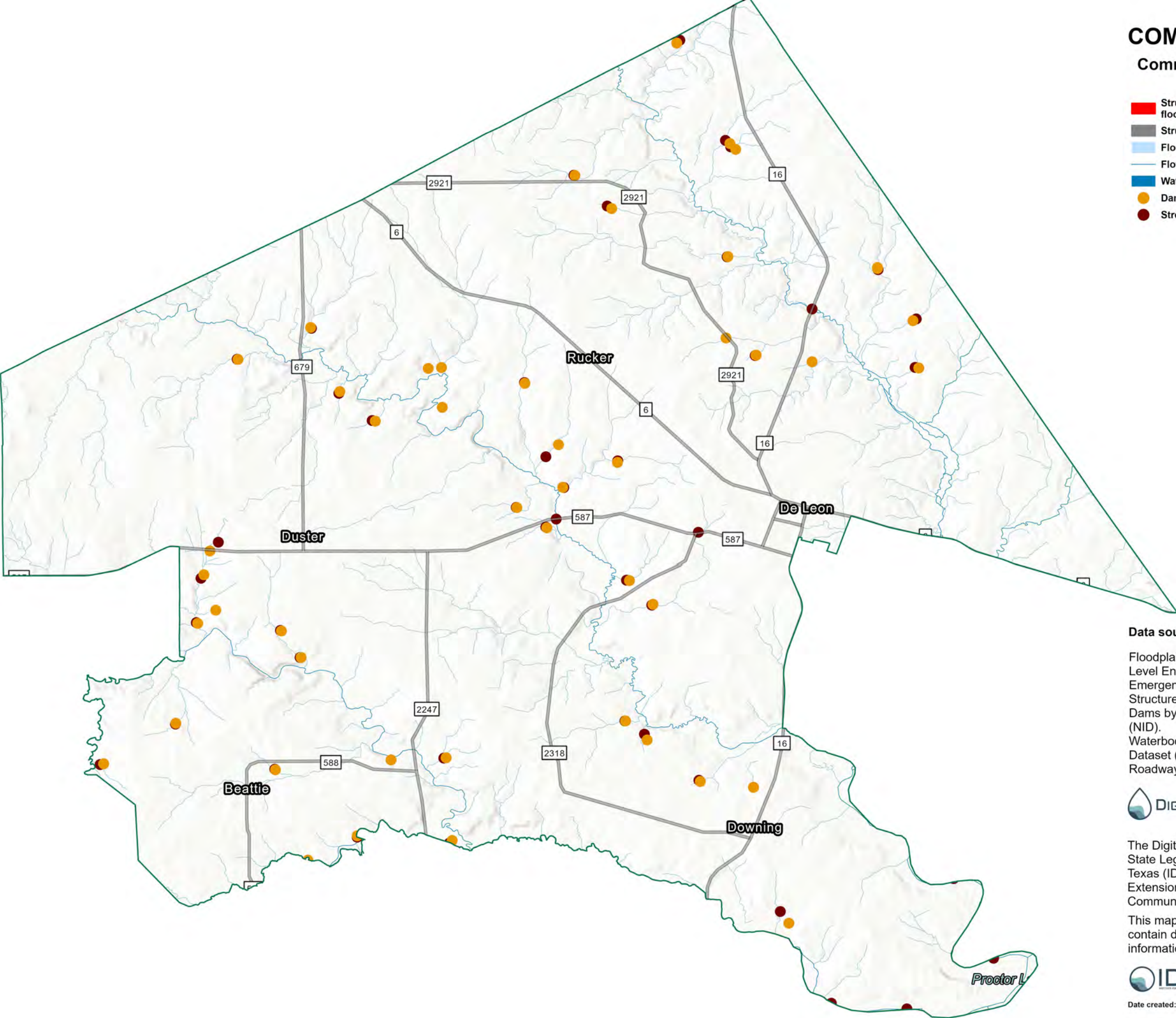
The Digital Risk Infrastructure Program (DRIP) is funded through the Texas State Legislature and is an initiative by the Institute for a Disaster Resilient Texas (IDRT), Texas A&M University at Galveston, Texas A&M AgriLife Extension, and The University of Texas at Austin Moody College of Communication.

This map is intended for planning purposes only. Map layers and floodplains do not contain drainage information and do not serve regulatory purposes. For additional information and questions, please email [idrt@tamug.edu](mailto:idrt@tamug.edu)

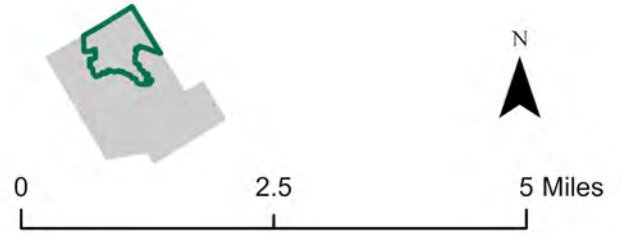


# COMANCHE COUNTY

## Commissioner Precinct 4



- Structures in floodplain
- Structures
- Floodplain
- Flowpath
- Waterbody
- Dam
- Stream gauge



### Data sources

Floodplain Quilt by the Texas Water Development Board (TWDB) and includes Base Level Engineering (BLE) and traditional 100-yr floodplain data by the Federal Emergency Management Agency (FEMA).  
Structures by FEMA GIS USA Structures.  
Dams by the U.S. Army Corps of Engineers (USACE) National Inventory of Dams (NID).  
Waterbodies by the United States Geological Survey (USGS) National Hydrography Dataset (NHD).  
Roadways by Texas Department of Transportation (TXDOT).

### DIGITAL RISK INFRASTRUCTURE PROGRAM

The Digital Risk Infrastructure Program (DRIP) is funded through the Texas State Legislature and is an initiative by the Institute for a Disaster Resilient Texas (IDRT), Texas A&M University at Galveston, Texas A&M AgriLife Extension, and The University of Texas at Austin Moody College of Communication.

This map is intended for planning purposes only. Map layers and floodplains do not contain drainage information and do not serve regulatory purposes. For additional information and questions, please email [idr@tamug.edu](mailto:idr@tamug.edu)



Date created: 09/11/2023

Esri, NASA, NOAA, USGS, FEMA, Texas Parks & Wildlife, CONAMP, Esri, HERE, Garmin, SwireGraph, GeoTechnologies, Inc, METI/NASA, USGS, EPA, NPS, USDA